

# Florida Anthropological Society NEWSLETTER



Number 221

Sarah Bennett, Editor

January 2016

## Between Sand and Sea: Exploring Florida's Past and Present 68<sup>th</sup> Annual Meeting of the Florida Anthropological Society

Hosted by the Palm Beach County Archaeological Society

Jupiter, Florida

May 19-22, 2016

By Ashley Hampton

The 68<sup>th</sup> Annual Meeting of the Florida Anthropological Society will be held in Jupiter, Florida from May 19-22, 2016. Palm Beach County Archaeological Society is proud to host the meeting at the [Wyndham Grand Harbourside](#), which overlooks the scenic Intracoastal Waterway.

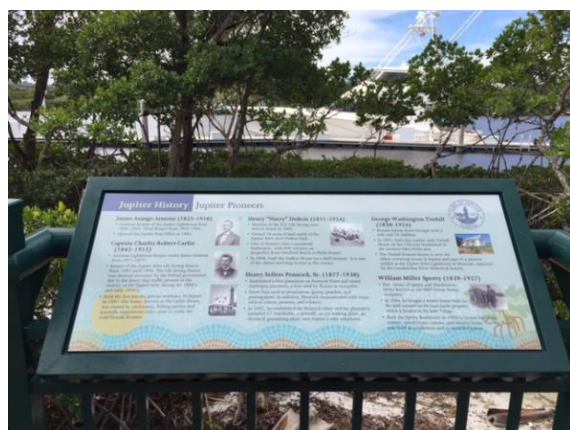
### Conference Venue

The conference paper presentations venue and hotel is the elegant Wyndham Grand Harbourside in the heart of Jupiter's bustling waterfront district. The locale boasts eight on-site restaurants offering fare from burgers and shakes to five star epicurean delights. The Wyndham Grand offers exquisite boutique style accommodations, breathtaking waterfront views, and amenities tailor-made to highlight guest's experience with elegance and style.

Guests of the FAS conference will enjoy a deeply discounted rate of \$139.00 per room, a stellar deal for accommodations in this 5 star hotel. To secure the special room rate, you must register by April 15th. Accommodations include complimentary parking and Wi-Fi access. For reservations, call [\(561\) 273-6600](#) and indicate that you are booking for The Florida Anthropological Society or Palm Beach County Archaeological Society.

### Preliminary Schedule Highlights

**Friday Evening Reception** – The reception will take place in Dubois Park, one of the largest remaining aboriginal shell mounds on the Atlantic seaboard. Recent excavations at the multi-component National Register Historic Site yielded the rare Spanish Faceted Chevron trade beads, which have been recovered from fewer than ten New World



Take a journey on Jupiter's Boardwalk through Time.

### In this issue:

2016 Annual Meeting Update	1
FAS Education Committee Update	3
First Annual Advocacy Day	4
Florida Archaeology Month 2016	4
Artifact Amnesty Survey Results	4
New FAS Website is Coming Soon!	5
Join FAS at the SAA Conference	5
Membership Secretary Update	5
Public Preservation Projects in Florida's Historic Cemeteries	5
The Calusa in Colonial Florida	6
FAS Student Grants and Awards	7
SAAA in Spain!	9
FAS' HB 803/SB 1054 Position	10

archaeological sites! Atop the mound is the recently restored Dubois Pioneer home (below). Guided tours of the site and pioneer home will be ongoing while guests imbibe wine and hors d'oeuvres.



directed major investigations including the Boyer Survey of Lake Okeechobee which made international headlines and was featured in National Geographic. That work only foreshadowed the incredible discoveries and advances in our understanding of the archaeology and prehistory of Southeast Florida. Davenport's keynote speech will reveal the findings of the Boyer Survey as well as the discovery of new earthworks in the Glades and along the coast. Davenport's contribution is monumental and no understanding of Florida archaeology is complete without consideration of recent findings in his jurisdiction.

**Saturday Evening Banquet** – Jupiter Florida is nationally renowned for its colorful history and rich cultural heritage, symbolized by the [iconic Jupiter Lighthouse](#). Guests of the FAS conference will enjoy a rare opportunity to dine “under the stars” with the iconic Jupiter Lighthouse as the centerpiece for the affair. While we dine, the lighthouse will be illuminated, lending a unique romance to the traditional FAS celebration. Guests at the banquet will enjoy a 3 course Gourmet Italian meal, served buffet style, as well as beer, wine, and host chapter PBCAS' special libation “Pirate's Rum Punch”! This year's banquet offers casual elegance at an affordable \$40.00 per person. Please note, the Loxahatchee River Historical Society will offer tours of the lighthouse before the cocktail bar opens. Museum tours will be ongoing through the evening. Please take care to arrive early so you can enjoy all this unique affair has to offer.

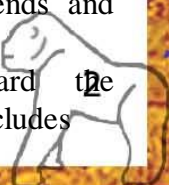
**Key Note Speaker:** Palm Beach County Archaeologist and Historic Preservation Officer Christian Davenport. The archaeology of southeast Florida in general, and Palm Beach County in particular, has been poorly understood for generations due to a lack of professional archaeological research. Since coming to work in the locality, Davenport has

### Sunday Morning Tours

On Sunday, attendees will have a variety of unique guided tours hosted by area archaeologists and specialists. All tours will meet in the hotel lobby, at 9:00am, and receive map directions to the tour location from the conference hotel.

9:00am – Swamp Buggy Tour to Big Mound City – The chance to visit Big Mound City is a once in a lifetime event! Christian Davenport guides this tour of this massive mound and earthwork monument built by the Belle Glade People. The site consists of at least 23 mounds, radiating causeways, and crescent-shaped ponds. This site is NOT open to the public, but a special arrangement has been made with the Florida Fish and Wildlife Commission in association with the Friends of Corbett conservation group to allow FAS conference participants to visit the mounds. To participate in this tour you must be in good physical condition and a liability waiver must be signed at the tour location.

9:00am – Jungle Cruise to Historic Trapper Nelson's – Enjoy mimosas with friends and colleagues as you cruise the “Wild and Scenic” Loxahatchee River aboard the Loxahatchee Queen III. The voyage includes





interpretive narration about the area's prehistory and history and features a stop at "Trapper Nelson's Zoo and Jungle Gardens". Trapper Nelson, "the wild man of the Loxahatchee" is a celebrated historic personae famous for his incredible good looks, financial wizardry, legendary and mysterious romantic dalliances with the fancy ladies of Palm Beach, and sadly, for being the subject of what most locals will attest is a murder mystery. In his old age, Trapper became a garrulous old recluse who was found shot to death in his cabin in the woods. With his death, the state of Florida came to possess his real estate fortune. The official cause of death was suicide... but those who knew Trapper reject that finding. Visit the scene of the crime and come to your own conclusion! This cruise is for adults (21+ only).

9:00am –Ecoarchaeological Kayak Tour of Riverbend Park – This guided tour by water will showcase the bounty and beauty of the Loxahatchee River's many natural and cultural treasures.

9:00am – Gallery Tour of Art Calusa Exhibit – Enjoy exclusive access to the award winning ArtCalusa exhibit on display at the Richard and Pat Johnson Palm Beach County Museum located in West Palm Beach, Florida. This exhibit showcases artists' interpretation of the life and experiences of Florida's indigenous peoples, particularly that of the Calusa.

Additionally, local and regional locations of historic interest within Jupiter and the vicinity will be made available for those who wish to go off on their own on Sunday. Updates will be published in the April 2016 Newsletter and at [www.fasweb.org](http://www.fasweb.org) when available.

### Call for Papers

We invite all FAS members, professionals, students, and avocationals to submit abstracts about current research projects for paper or

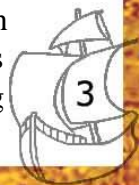
poster presentation at the conference. We are encouraging presentations of a broad range of topics pertaining to Florida anthropology, archaeology, history, and other related disciplines. Paper and poster presentations will occur on Saturday, May 21, 2016. Papers and posters should state the research question(s) that guided the work and summarize conclusions or issues resolved by the investigation.

Please note the following guidelines:

- Only one paper or poster per presenter will be accepted
- An 18-minute time limit for each paper presentation will be strictly enforced
- Abstracts of up to 100 words will be accepted
- Submission of conference registration form and conference fee must be completed before submission of abstract
- Conference registration and abstract submission will be available through the FAS website at [www.fasweb.org](http://www.fasweb.org).
- Online abstract submission and registration for presenters is due by **Thursday, March 31, 2016.**

### FAS Education Committee Update

The education committee conference will focus on advocacy, interacting with legislators, and interagency coordination in statewide initiatives. This is a hot topic right now as HB803/SB1054 have dominated archaeological conversations. The FAS board voted to invite Malinda Horton, Executive Director of the Florida Association of Museums and a lobbyist to lead the Advocacy 101 workshop. The Chapter luncheon will include a Social Media 101 workshop, which will introduce best practices for constructing and maintaining a Facebook page for your organization and what other social media outlets are available. Bob Gross will provide a brief presentation on the archive at P.K. Yonge so that chapters Can begin to actively engage in archiving their good work.





## Advocacy Day at the Capitol

March 1, 2016

10 am-2 pm

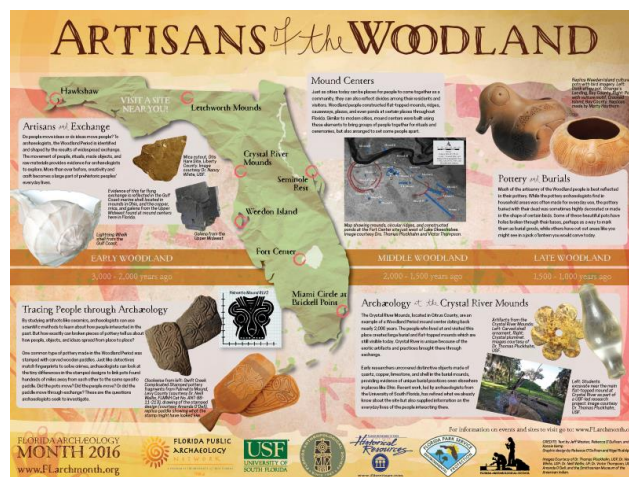
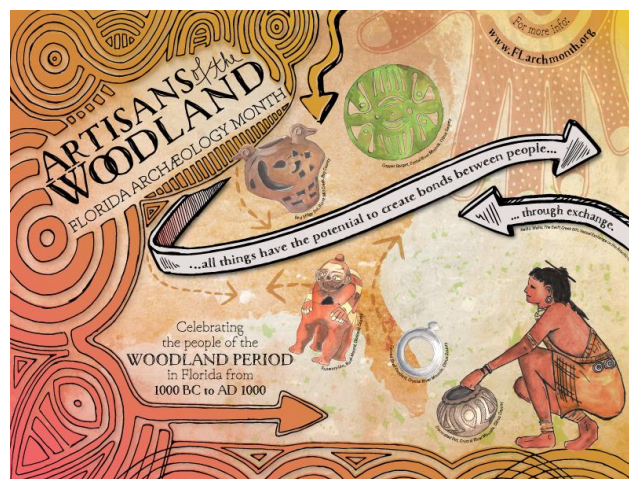
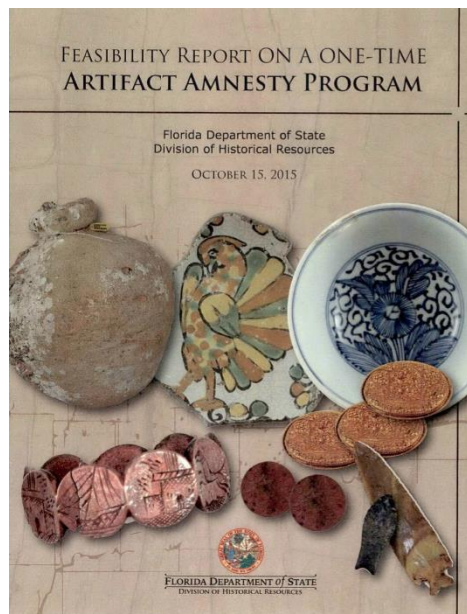
Kick off Florida Archaeology Month in Tallahassee! Barbara Clark organized the first ever Advocacy Day with the intention to make this an annual event. Join anthropology and archaeology organizations and stewards from across the state as we present ourselves to our legislators. The day will enable participants to engage state legislators and to educate them about archaeology, the many existing archaeology organizations, and opportunities for collaborative work among professionals, avocationalists, and students. Participating organizations currently include FPAN, FAS, some FAS Chapters, UWF, and the New Smyrna Beach Museum of History. For event information and coordination, please contact Barbara Clark ([BarbaraAClark@uwf.edu](mailto:BarbaraAClark@uwf.edu)).

## Florida Archaeology Month 2016 Artisans of the Woodland

Do people move ideas or do ideas move people? To archaeologists, the Woodland Period is identified and shaped by the results of widespread exchange. The movement of people, rituals, made objects, and raw materials provides evidence for archaeologists to explore. More than ever before, creativity and craft becomes a large part of prehistoric peoples' everyday lives.

## Artifact Amnesty Survey Results Available

In 2015, at the request of the Florida legislature, the Division of Historical Resources (DHR), Florida Department of State, implemented a survey to study the feasibility of implementing a one-time amnesty program related to privately held historic and archaeological artifacts from state-owned or state-controlled lands. Following completion of the survey, the DHR generated a report overviewing archaeology in Florida including





public protections for archaeological sites and the history of programs such as Isolated Finds. All public comment related to this survey is in the report as well as summaries of responses to each question including comments that are in support and against an amnesty program. Approximately 1,300 individuals participated in the survey. The full report is 237 pages and can be downloaded from: <http://flpublicarchaeology.org/uploads/DHRAmnestyReport.pdf>.

## FAS Website gets a Face Lift!

FAS contracted Organic Media Group in Fort Myers to transfer our existing website content into a fresh, easier to use website. The new site has enhanced features such as a map locator for statewide chapters, login access for chapter representatives to update their chapter information including an area to highlight upcoming events, online conference registration and abstract submission for the annual meeting, and more organizational history including past conferences, officers, and award recipients.



While the site will launch in February 2016 with our previous website content and the new features mentioned above, the FAS board is dedicated to continuing to improve our user interface on the web. We will be revising content and the new site throughout 2016. Please feel free to share your ideas with us!

## FAS at the Society for American Archaeology Annual Meeting!

The Florida Anthropological Society will serve as an exhibitor at the [81<sup>st</sup> Annual Meeting of the Society for American Archaeology](#). The meeting will be held in Orlando from April 6-10, 2016. The exhibit hall will be open April 7 through April 9 from 9am-5pm. FAS members will be on hand to discuss the organization's programs and to provide information on membership, the Florida Anthropologist journal, the FAS Annual Meeting, Florida Archaeology Month, the Education Committee and much more. We are currently seeking FAS members attending the SAA Annual Meeting who would be willing to help out at the table. Any interested persons or parties should contact [jwenzel@ufl.edu](mailto:jwenzel@ufl.edu).

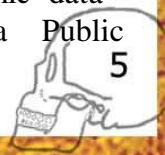
## Membership Secretary Update

Membership notifications and/or communications may be delayed. Pat Balanzategui, Membership Secretary, broke her patella late last year. She recently underwent surgery and is currently undergoing rehabilitation. Though membership is always important to Pat, the recovery process will come first. If you have pressing questions, please contact me ([smb87@students.uwf.edu](mailto:smb87@students.uwf.edu)) and I will do all that is possible to provide answers.

## Public Preservation Projects in Florida's Historic Cemeteries

by Emily Jane Murray

Historic cemeteries in Florida, as well as throughout the nation, are some of the most at risk heritage sites. These places contain not only vital statistics about the people buried in them, but also information on the communities - culture, religion, and socioeconomic data - who created them. The Florida Public Archaeology Network (FPAN) has

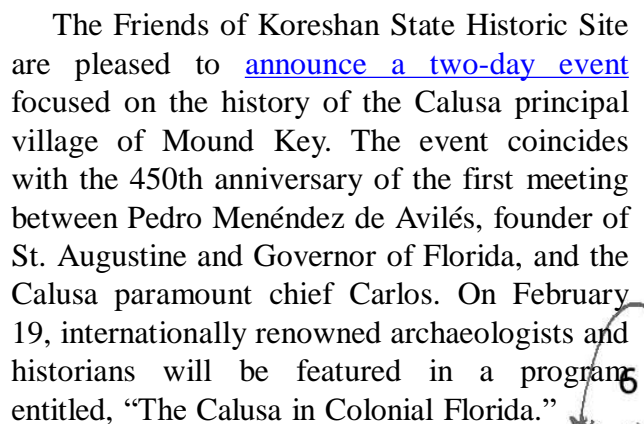


For some years now, FPAN has offered the Cemetery Resource Protection Training (CRPT). This daylong workshop offers participants an overview on basics of historic cemetery management and preservation. Morning presentations include best practices on maintenance and conservation, a discussion of Florida laws that pertain to cemeteries, an introduction to the Florida Master Site File, and examples of various research tools including ground penetrating radar. In the afternoon, the training takes participants into a local cemetery to put what they have learned into action with activities like site assessments and headstone cleaning.

More recently, FPAN formed the Florida Historic Cemetery Recording Project to conduct more detailed surveys of historic cemeteries. Staff partnered with groups that include the West Augustine Improvement Association, Valencia College, University of Central Florida (UCF) Graduate Anthropology

Most of these programs are offered at the request of local groups that work at or are interested in cemeteries. If your FAS chapter is interested in getting involved with historic cemeteries in your area, please get in touch with your regional FPAN office by visiting our website: [www.fpan.us](http://www.fpan.us).

## by Theresa Schober





Speakers include Jerald Milanich, Kathleen Deagan, J. Michael Francis, and John Worth. The afternoon will include a workshop to share ideas of how public access and interpretation can be improved at Mound Key. Elks Club, 3231 Coconut Road, Estero, FL. The program is free with donations requested to support a documentary film about Mound Key that is due to be released later in 2016.

On Saturday, February 20 boat or kayak to Mound Key and enjoy on-site interpretation from 10am to 2pm. For more information or if you would like to coordinate a group attending from your chapter, contact Theresa Schober at [MakingHistoryMemorable@gmail.com](mailto:MakingHistoryMemorable@gmail.com) or call [\(239\) 851-9040](tel:239-851-9040).

## The Calusa in Colonial Florida

**February 19, 2016 | 9:15 a.m. — 4:00 p.m.**  
**Elks Club | 3231 Coconut Road | Estero, Florida**

**Jerald T. Milanich** | *When Worlds Collided - The European Invasion of La Florida*  
 Professor Emeritus at the University of Florida

**Kathleen Deagan** | *First Colony — Pedro Menéndez in Florida, 1565-1572*  
 Distinguished Research Curator Emerita at the Florida Museum of Natural History

**J. Michael Francis** | *Slaves, Interpreters, and the Enterprise of Florida*  
 Hough Family Chair of Florida Studies, University of South Florida

**John E. Worth** | *Mound Key and the Dawn of Calusa-Spanish Relations*  
 Associate Professor of Anthropology, University of West Florida

~ Lunch available for purchase 12:30-1:30 p.m. ~

**Theresa Schober** | *Bringing the Mound Key Story to Life — The Making of "Escampaba: The Kingdom of Carlos"* | Executive Producer

**Public Workshop** | Share your ideas for the future of Mound Key Archaeological State Park

**February 20, 2016 | 10:00 a.m. — 2:00 p.m.**  
**Interpreted tours available at Mound Key, Estero Bay**

Access by personal watercraft or kayak reservations through the College of Life Foundation  
[esteronaturalist@gmail.com](mailto:esteronaturalist@gmail.com) or call 239.992.2184



Pedro Menéndez | Chad Light

## Student Prize Competition

Undergraduate and graduate students currently enrolled in degree granting collegiate programs are encouraged to compete for a prize. The student must submit a paper of original research that contributes to our understanding of Florida's cultural history. Contestants must register for the conference and submit a copy of their paper by the respective deadlines listed below and make an oral presentation at the FAS meeting. The oral presentations must be drawn from the written paper.

- The written paper cannot exceed 2500 words and must be typed and double-spaced
- Abstracts, registration forms, and conference fee must be submitted by **Thursday, March 31, 2016**.
- Deadline for submitting the full paper by email is **Friday, April 15, 2016**.

Judging criteria for student papers and oral presentations are: quality of writing, overall presentation, quality of arguments and supporting data, and overall contribution to our understanding of Florida's cultural

past and/or present. Prizes will be awarded during the Saturday evening banquet. Email questions and submissions to Ashley Hampton at [ahampto3@fau.edu](mailto:ahampto3@fau.edu).

## **Other Student Opportunities**

### **The FAS Dorothy Moore Student Grant Now Accepting Applications**

The Florida Anthropological Society (FAS) is making available \$500.00 to be awarded annually to archaeology students (B.A., M.A., or Ph.D.) who are currently enrolled in a Florida university. The grant money will assist students conducting archaeological research in Florida. Grant funds can be used to cover the costs associated with archaeological fieldwork, special analyses (e.g., radiocarbon dates, faunal or botanical analyses, soils analysis, etc.), and, in some cases, travel expenses associated with presenting a paper based on the student's research at a professional meeting.

Students interested in applying for the grant should submit a letter, not to exceed two pages, that describes the project for which the funds are being requested; what research question(s) or problem(s) are being addressed; how the funds will be applied to these problems; what, if any, additional funds will be used to accomplish the research; and how the research will contribute to Florida archaeology. The applicant should include a budget indicating the amount requested and describing how the money will be spent along with a letter(s) of support from faculty. For more information, or to submit your application, contact: Dr. Robert Austin, FAS Student Grant, P.O. Box 2818, Riverview, FL 33568 or via email to [roc\\_doc@verizon.net](mailto:roc_doc@verizon.net). Deadline for applications is **Thursday, March 31, 2016**.

### **Chuck and Jane Wilde Archaeological Research Award**

The annual Chuck Wilde Archaeological Research Award is given by the Kissimmee Valley Archaeological and Historical Conservancy. This scholarship is dedicated to the memory of two exemplar avocational archaeologists who dedicated years of their lives to promoting education that prioritized the significance of South Central Florida's cultural resources. This award is only offered to students continuing in the field of Florida archaeology and its use is limited to archaeological research costs. The award (\$500.00) might be applied toward processing fees such as C14 dating, participation in fieldwork opportunities, or in research materials. Each student that submits a paper or poster at the 2016 FAS Annual Meeting (either may be co-authored by a professional) will have the opportunity to enter the competition.

Please mark the appropriate box on the conference registration form to participate. One entry will be drawn at random at the Friday FAS Board Meeting to decide the recipient. The recipient shall receive one complimentary ticket to the awards banquet to accept the award.

### **WMS/LSSAS Student Travel Grants**

The Warm Mineral Springs/Little Salt Spring Archaeological Society (WMS/LSSAS) is pleased to offer \$200 supplemental travel grants to two eligible students who present a paper or poster at the FAS 2016 Annual Meeting. The grant can be used for expenses pertaining to the meeting (including hotel, registration, and travel expenses). Students enrolled full-time in an undergraduate or graduate program and first-time FAS presenters are eligible and invited to apply.

For consideration, send a letter of request for an FAS 2016 Travel Grant with your paper or poster abstract, copy of current student ID, and proof of registration to Jodi Johnson at



[jodijohnsonrossi@gmail.com](mailto:jodijohnsonrossi@gmail.com) no later than **Thursday, March 31, 2016**. Selection of awards will be based on review of the letter of

application and abstract, and proof of conference registration and university enrollment.

### **A Sneak Peek at SAAA's trip to Avilés, Spain**

More photos and the full story will be featured in the April newsletter

Photos by Nick McAuliffe



Monte Areo



Eroded coastline stratigraphy with lithics

### **Board of Directors**

President: Theresa Schober

Journal Editor: Jeff DuVernay and Julie Saccente

Newsletter: Sarah Bennett

1<sup>st</sup> Vice President: Jason Wenzel

2<sup>nd</sup> Vice President: Emily Jane Murray

Recording Secretary: Jon-Simon Suarez

Membership Secretary: Pat Balanzategui

Treasurer: Joanne Talley

Directors: Jim South

Linda Geary

Gregg Harding

Immediate Past President: Jeff Moates

### **Information for Contributors**

The *FAS Newsletter* is published quarterly: January; one month before the annual meeting; July; and October. Brief articles, chapter news, and other items of interest are welcome for submission. The submission deadline for the

next issue is **March 30, 2016**. Contact the editor **Sarah Bennett, 2615 Crestwood Avenue, New Smyrna Beach, FL 32168**; Email: [sarah.bennett.archaeo@gmail.com](mailto:sarah.bennett.archaeo@gmail.com). Address changes should be sent to the FAS Membership Secretary: **Pat Balanzategui, P. O. Box 1135, St. Augustine, FL 32085-1135**.

### **FAS Membership Information**

The Florida Anthropological Society (FAS) is open to persons interested in anthropology, archaeology, preservation of cultural resources, and community education. FAS members receive the journal *The Florida Anthropologist* and the *FAS Newsletter*. Information on FAS is on the website: <http://www.fasweb.org>. **Dues are:** Regular and Institutional -- \$30; Family -- \$35, Student -- \$15 with a copy of a valid student ID when applying; Sustaining -- \$100; Patron -- \$1000; Benefactor -- \$2500 or more. Please add \$25 for foreign addresses.



On February 6, 2016, the FAS Board of Directors voted unanimously to oppose HB803 and SB1054, which relate to the recovery and disposition of historical and archaeological artifacts on sovereignty submerged lands.

HB803 and SB1054 create a citizen archaeology permit process that allows private individuals to remove artifacts from state-owned submerged lands using hand-held excavation equipment; transfers ownership of recovered artifacts; and includes a provision for the Division of Historical Resources to provide detailed information on site areas to be avoided.

The FAS Board of Directors oppose HB803/SB1054 on the following grounds:

- This proposed legislation directly violates Chapter 258, *Florida Statutes* wherein no person shall remove artifacts or dig in any park area or waters thereof.
- The proposed legislation inappropriately redacts an existing exemption to Florida's Sunshine Law for sensitive archaeological site location information without separate due process. This exemption is in place due to the propensity for looting of known archaeological sites.
- The proposed legislation places Florida's unique submerged mortuary sites at significant risk and potentially violates federal (NAGPRA) and state (Section 872, *Florida Statutes*) law concerning disturbance of unmarked human remains and associated burial objects.
- Much of Florida's submerged heritage is American Indian in origin. The proposed legislation was drafted without input from Florida's indigenous or other descent communities.
- The proposed legislation sets permit fees (\$100) and civil penalties (maximum \$1,000) that are inconsistent with the commercial market value of archaeological and historical artifacts. This imbalance may incentivize the antiquities market and lead to the misuse of the citizen archaeology permit process for illicit recovery of submerged cultural resources. The collection and sale of artifacts from state-owned lands is currently a third-degree felony.
- The proposed legislation provides no budget appropriation for a citizen archaeology permit process to be administered or for increased archaeological and historical site supervision.
- The proposed legislation imposes significant challenges to the law-enforcement agencies that are charged with the protection of Florida's natural and cultural heritage.

The FAS Board of Directors emphatically supports efforts to integrate interested members of the public in archaeological and historical research that enriches our knowledge of Florida's human history. This is accomplished annually through public presentations, festivals, and events such as the statewide Florida Archaeology Month, active archaeological excavations and laboratory projects that accept volunteers, the dissemination of information at the annual FAS conference and in *The Florida Anthropologist* journal, among many other opportunities. Cooperative public engagement is not realized through the private collection and sale of Florida's cultural heritage from state-owned lands.



## Florida Anthropological Society Local Chapters

### *FAS Chapter*

Ancient Ones Archaeological Society of North  
Central Florida  
Archaeological Society of Southern Florida  
Central Florida Anthropological Society  
Central Gulf Coast Archaeological Society  
Emerald Coast Archaeology Society

Gold Coast Anthropological Society  
Indian River Anthropological Society  
Kissimmee Valley Arch. & Hist. Conservancy  
Palm Beach County Archaeological Society  
Panhandle Archaeological Society at Tallahassee  
Pensacola Archaeological Society  
St. Augustine Archaeological Association  
Southeast Florida Archaeological Society  
Southwest Florida Archaeological Society  
Time Sifters Archaeology Society  
Volusia Anthropological Society  
Warm Mineral Springs/Little Salt Spring  
Archaeological Society

### *Address*

2902 NW 104<sup>th</sup> Court, Unit A, Gainesville, FL  
32606  
2495 NW 35<sup>th</sup> Avenue., Miami, FL 33142  
P.O. Box 948083, Maitland, FL 32794  
PO Box 1563, Pinellas Park, FL 33780  
139 Miracle Strip Parkway SE, Fort Walton  
Beach, FL 32548  
570 SW 124th Terrace, Davie FL, 33325  
PO Box 73, Cocoa, FL 32923-0073  
2200 N. Oleander Drive, Avon Park, FL 33825  
9722 Alaska Circle, Boca Raton, FL 33434  
P.O. Box 20026, Tallahassee, FL 32316  
P.O. Box 13251, Pensacola, FL 32591  
P.O. Box 1301, St. Augustine, FL 32085  
P.O. Box 2875, Stuart, FL 34995  
P.O. Box 9965, Naples, FL 34101  
P.O. Box 5283, Sarasota, FL 34277-2883  
P.O. Box 1881, Ormond Beach, FL 32175  
P.O. Box 7797, North Port, FL 34287

**Florida Anthropological Society, Inc.**

**P. O. Box 1135**

**St. Augustine, FL 32085-1135**

